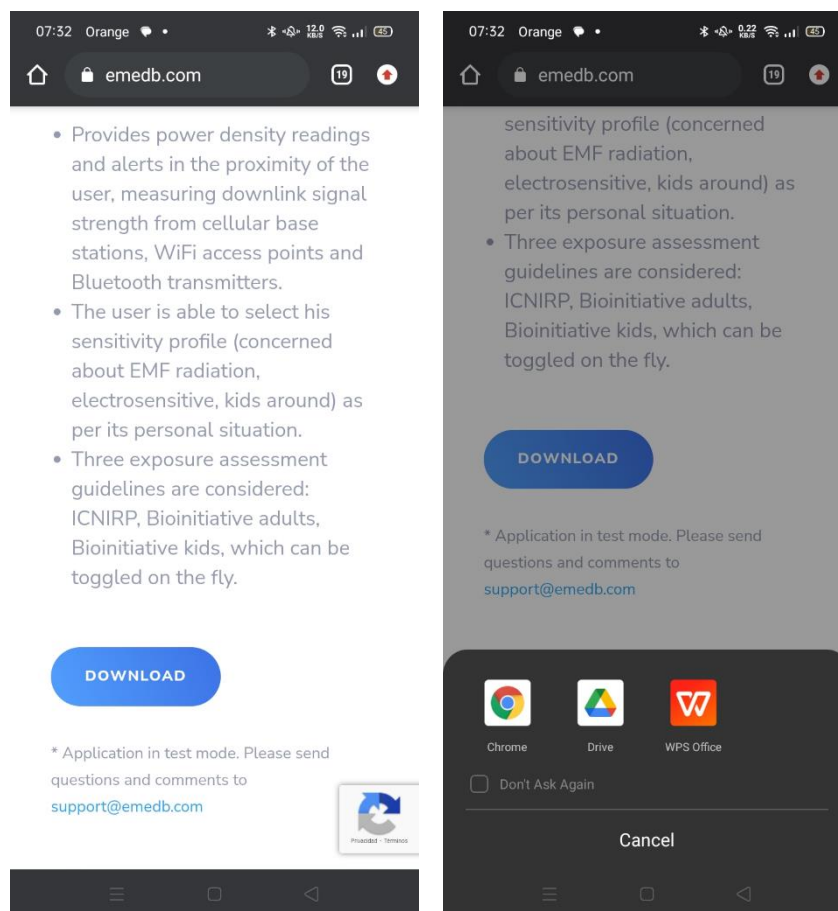


EMF SENTINEL: Installation and Configuration Guide

Installation

1. Download the Application:

- Open your web browser and navigate to emedb.com.
- Click on the "Download" button. We recommend using Chrome for the best experience, though other browsers are also supported.
- You will see several download options. Select your preferred version.
- Click on "Download anyway" followed by the "OK" button to start downloading the APK (installation file).



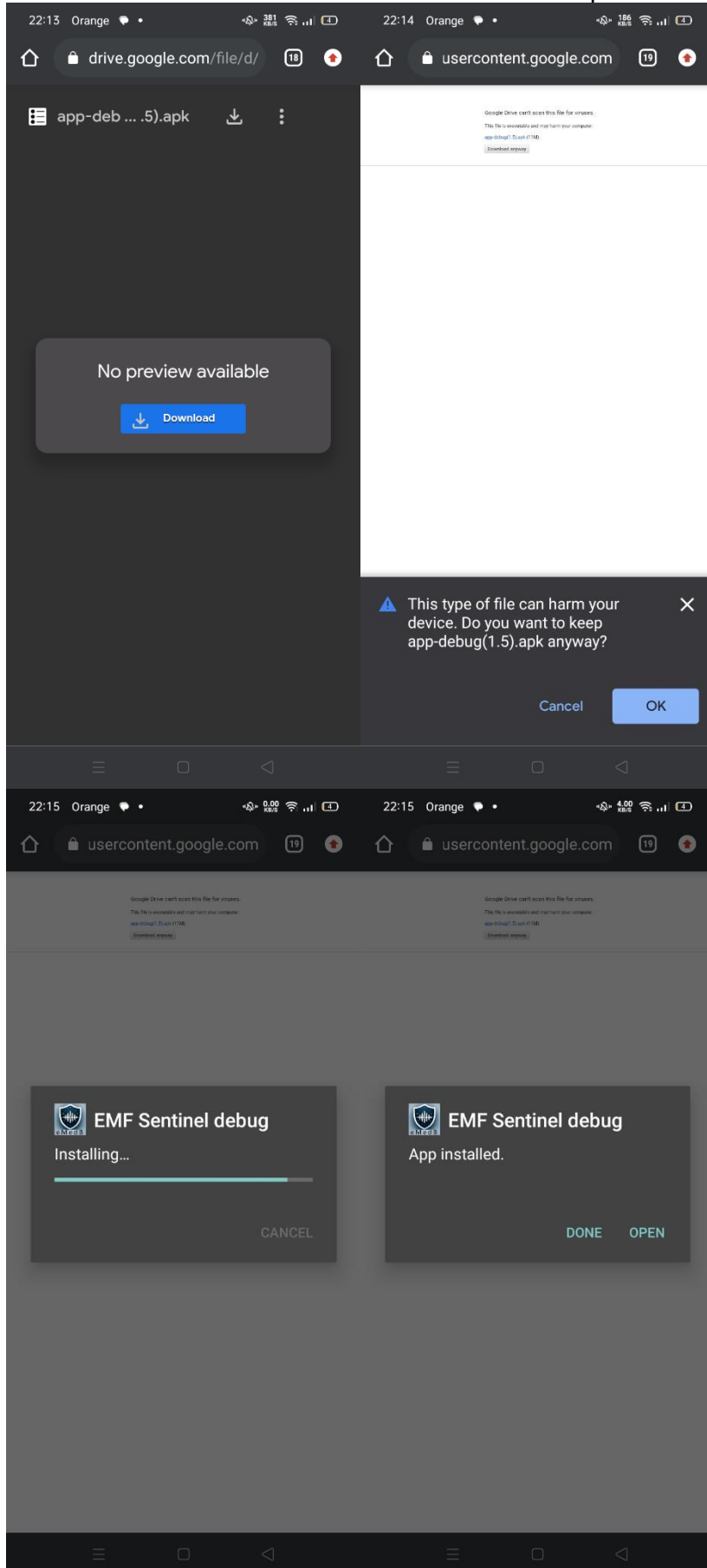
2. Security Notice:

- Your browser may warn you about downloading potentially harmful files. This is a standard caution for all APK downloads.
- Please be assured that the EMF Sentinel APK has been rigorously tested and is completely safe for your device.

3. Install the Application:

- After downloading, open the APK file to install the EMF Sentinel app.

- Follow the on-screen instructions to complete the installation.



Configuration & Operation

1. Accept Legal Terms:

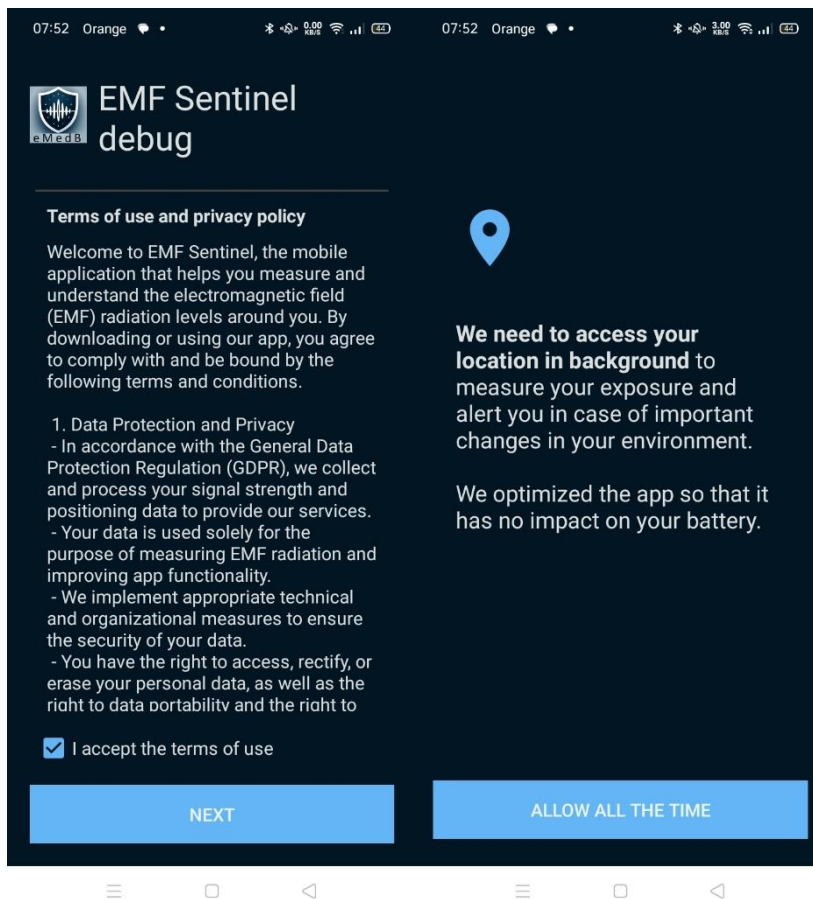
- Start the app and accept the Terms of Use and Privacy Policy.

2. Select Radiation Sensitiveness Profile:

- Choose a radiation sensitivity profile that best suits your needs: Children, eSensitive, or Standard. You can change this setting at any time to suit different environments.
- These profiles are based on recognized EMF assessment standards, including INCIRP and the Bioinitiative Reports of 2007 and 2012.

3. Enable Location Services:

- Allow the app to access your location. This enables EMF Sentinel to accurately analyze your immediate EMF environment.



Using EMF Sentinel

- **Monitor EMF Exposure:**
 - The app measures RF radiation from various sources, including mobile base stations, Wi-Fi access points, and Bluetooth devices.
 - View real-time Power Density calculations in the "Live" section. Display options include watt/m², dBm/m², and exposure level, which can be adjusted in the Settings menu.
- **Access Historical Data:**
 - Visit the "Statistics" section to review historical data and trends.
- **Receive Notifications:**
 - EMF Sentinel will alert you to new sources detected and significant changes in Power Density values.

By following these steps, you can ensure that EMF Sentinel is set up correctly and begins protecting and educating you about your EMF environment immediately.

